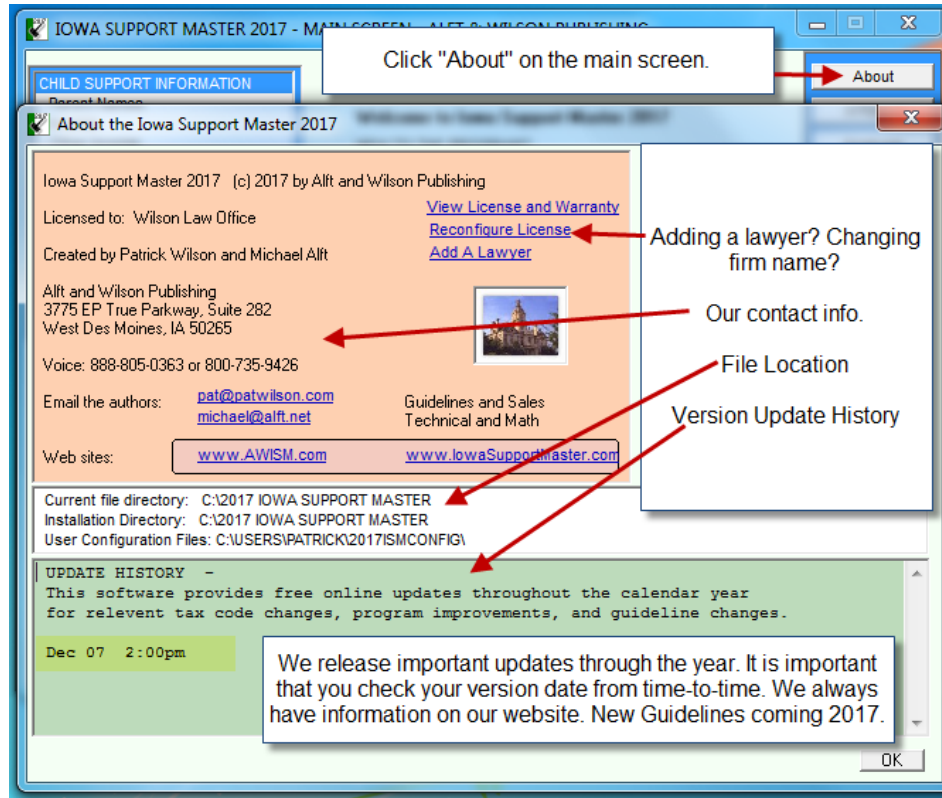


Basic Child Support Calculations Using Iowa Support Master

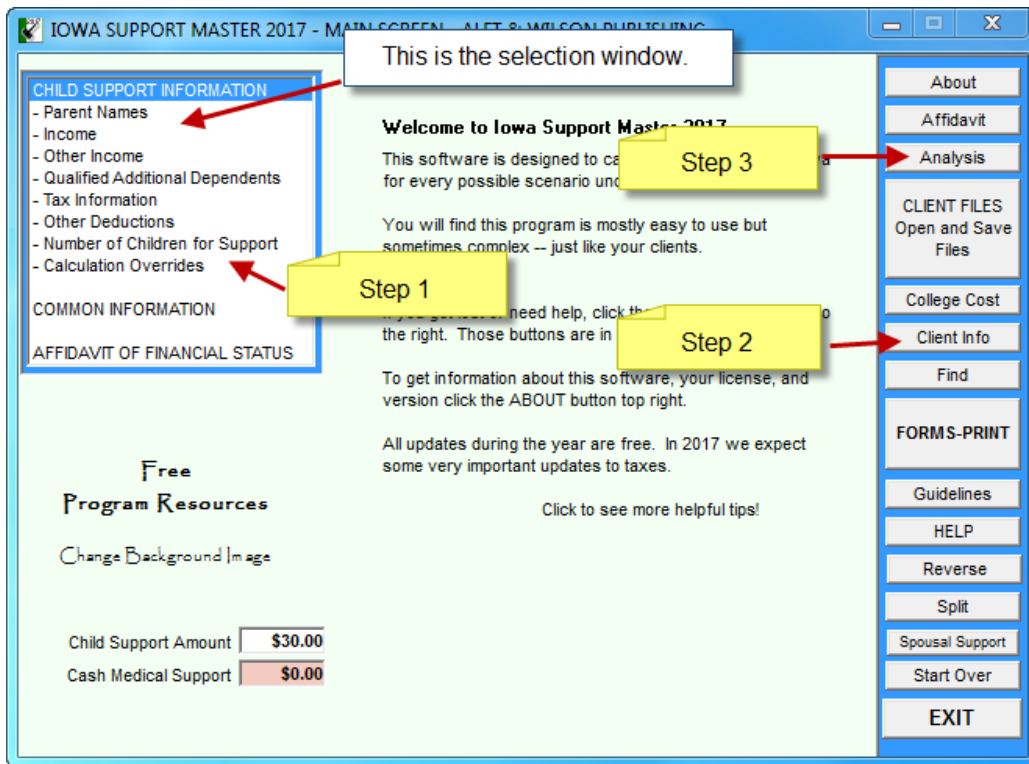
By Alft & Wilson Publishing

- I. Iowa Support Master Basics
 - A. Child Support Guidelines – Print and Keep Handy
 - B. About button.
 - C. Update Software



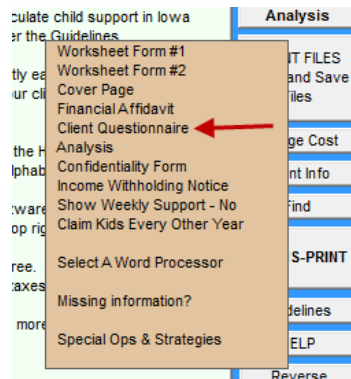
II. Main Screen Features

- A. Selection Window.
- B. Selection Window.
- C. Free Program Resources
- D. Analysis Page
- E. Client Files – Open/Save – Renaming Files – Print/Staple!
- F. Client Info
- G. Find
- H. Guidelines
- I. Help



III. Logical Sequence of preparing a Form 1.

- A. First things first, get as much info as you can to prepare your Form 1. Use our “Client Questionnaire” or create your own. The client can fill it out and you can keep it in the file as proof they supplied the numbers.



- B. Start at the top of the Selection Window and go down, step-by-step.
- Have questions on a topic? Click it for instant help.
 - Click the “Help” link.
- C. Go to the “Client Info” button to enter additional information as needed.
- D. Click “Missing Info” found within the Forms/Print Button. See if you left anything out.

- E. Check the “Analysis Page” for a very detailed, side-by-side comparison of all of the information you have entered. Check for warnings and advice. Look at the values of claiming the children toward the end.
- F. If more than one child, go to Forms/Print and click the “Special Ops & Strategies” link. Click “Tax Effects of Claiming the Kids”.
- G. Save your file.
- H. Read for Form 1? Forms/Print – select Form 1.
 - a. This is the print-preview screen. You may edit anything that appears on this screen before you print. Nothing you change will be saved in the program file.
 - b. Open the file in your word processor and edit it. Just remember, changes are not saved.
 - c. If you print the Form, note at the top of the form the file name.
- I. If running multiple calculations, once you print your form, please staple it together. It is very easy to mix up the documents.

IV. Sample Cases

- A. 3 Kids – Standard Child Support Calculation
 - a. Health Insurance.
 - b. Child in daycare.
 - c. Section VI
- B. 2 Children – Unreasonable Health \$ – Shared Care – Sample File Two
 - a. See the Shared Custody Unreasonable Health Cost PDF
- C. 2 Children – Low Income NCP – Sample File Three
 - a. See the Low-Income Analysis PDF

V. Comparing Forms

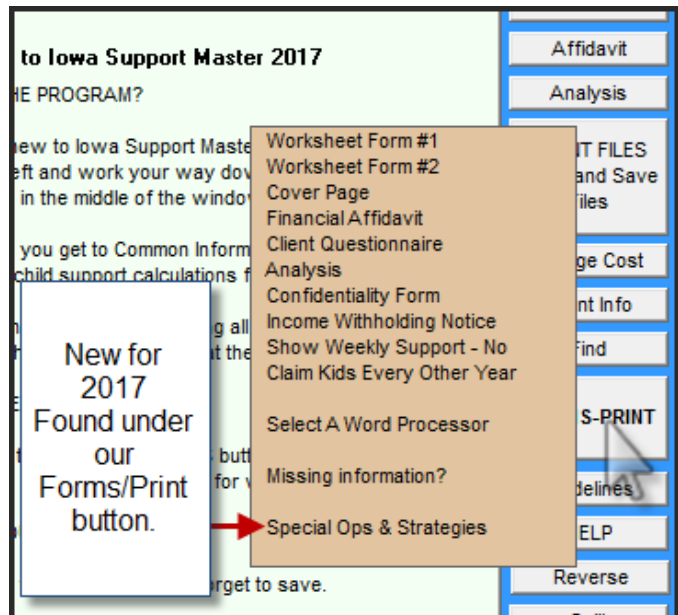
- A. Numbers don’t match? Check the Version Date.
- B. Compare the forms side-by-side.
- C. Ask the other side for a copy of the Analysis Page.
- D. Override Feature – did they use it to change a number?
- E. Did they edit the form in the edit mode?

VI. Support and Help

- A. The Guidelines
- B. In-Program Help Features.
- C. Website Help – iowasupportmaster.com
- D. Call us – 515-822-0203 (Pat Wilson Cell)

<p>Alft and Wilson Publishing 3775 EP True Parkway, Suite 282 West Des Moines, IA 50265</p> <p>Voice: 888-805-0363 or 800-735-9426</p> <p>Email the authors: pat@patwilson.com michael@alft.net</p>	 <p>Click "About" in the upper right corner of the screen.</p>
<p style="text-align: center;">Guidelines and Sales Technical and Math</p>	

VII. 2017 Features and Changes for 2017



to Iowa Support Master 2017

THE PROGRAM?

new to Iowa Support Master
left and work your way down
in the middle of the window

you get to Common Inform
child support calculations f

g all
at the

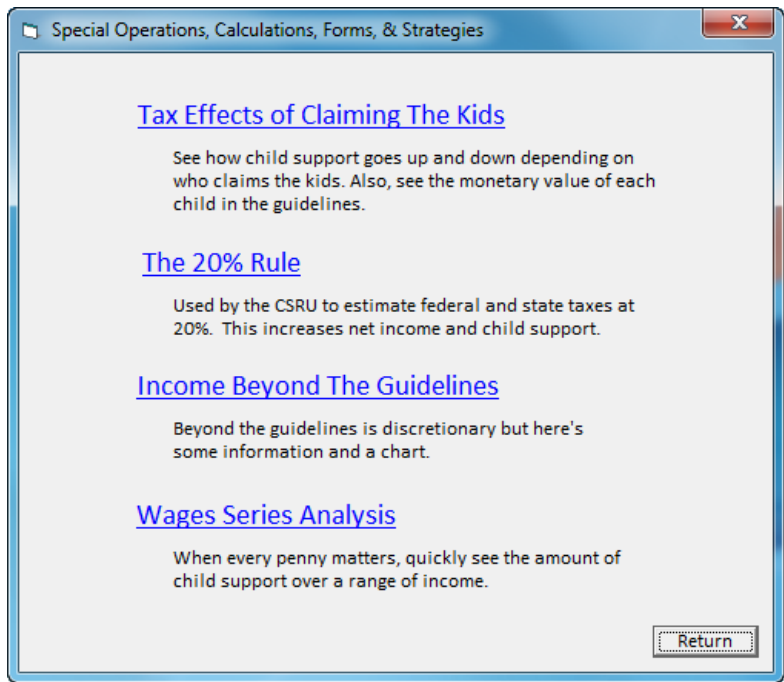
butt
for v

target to save.

New for 2017 Found under our Forms/Print button.

- Worksheet Form #1
- Worksheet Form #2
- Cover Page
- Financial Affidavit
- Client Questionnaire
- Analysis
- Confidentiality Form
- Income Withholding Notice
- Show Weekly Support - No Claim Kids Every Other Year
- Select A Word Processor
- Missing information?
- Special Ops & Strategies

Menu items on the right: Affidavit, Analysis, PRINT FILES and Save files, Page Cost, Print Info, Find, S-PRINT, Guidelines, ELP, Reverse



Special Operations, Calculations, Forms, & Strategies

[Tax Effects of Claiming The Kids](#)

See how child support goes up and down depending on who claims the kids. Also, see the monetary value of each child in the guidelines.

[The 20% Rule](#)

Used by the CSRU to estimate federal and state taxes at 20%. This increases net income and child support.

[Income Beyond The Guidelines](#)

Beyond the guidelines is discretionary but here's some information and a chart.

[Wages Series Analysis](#)

When every penny matters, quickly see the amount of child support over a range of income.

Return

A. Tax Effects of Claiming the Kids Example

NCP \$78,000 CP \$58,500 (primary care)
 3 children
 NCP will claim 2
 CP will claim 1 and HoH
 NCP pays \$2,400 annual health care cost.
 Child support \$1,191.61

USE TAX EFFECTS FEATURE

Cursor over Forms-Print
 Special Ops
 Tax Effects of Claiming the Kids

Iowa Support Master - Tax Effects on Guideline Child Support

Tax Effects on Child Support

All else being equal, this function demonstrates the guideline value of each child in the calculation depending on filing status and who claims the kids.

Number of Support Children: 3

Oldest Child	Noncustodial Parent Claims As Dependent	Custodial Parent Claims As Dependent	Primary Custody		Shared Custody	
			Value	Value	Value	Value
1	<input type="checkbox"/>	<input checked="" type="checkbox"/>	646.93		5.32	
2	<input checked="" type="checkbox"/>	<input type="checkbox"/>	986.85	339.92	56.06	50.73
3	<input checked="" type="checkbox"/>	<input type="checkbox"/>	1,191.61	204.76	110.39	54.33

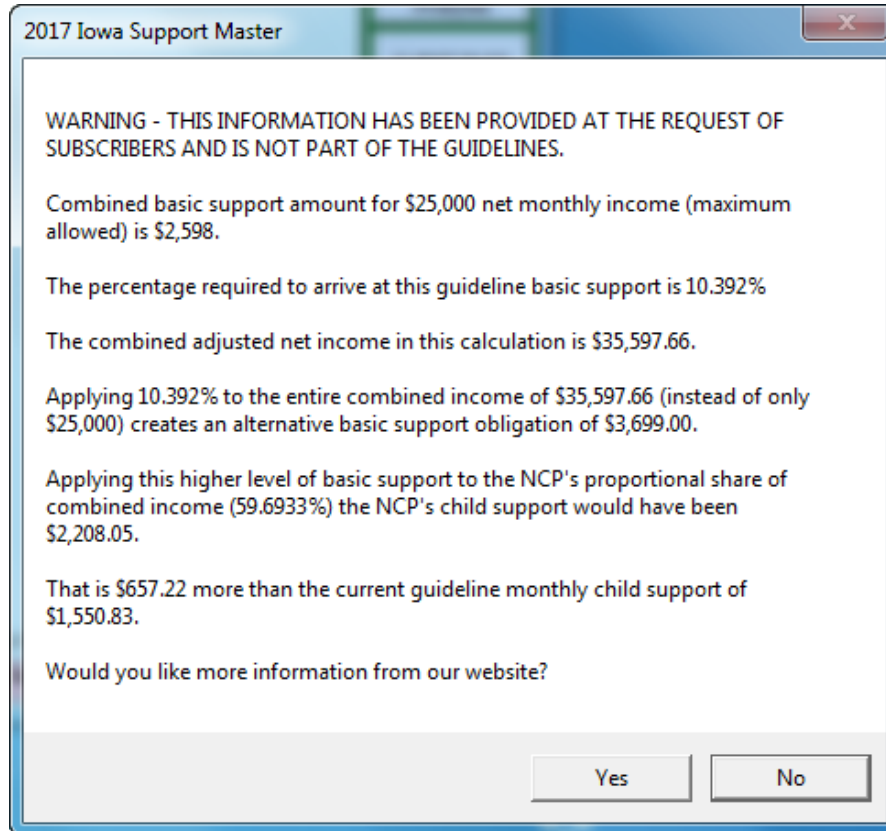
Youngest Child

Filing Status: Single

Filing Status: Head of House

Help Return

B. Income Beyond Guidelines - Sample Case – High Income



VIII. Select Issues – Child Support Guidelines

- A. QADD – Read the help file on this in the program.
- B. Filing Status
- C. Health Insurance – Cash Medical – Hawk-I
 - a. Override - Cash Medical
 - b. Alert the Court – Full Disclosure.
- D. Children – Child Care Expenses (New Guidelines)
- E. Spousal Support (New Guidelines)

IX. How to Update Iowa Support Master

- A. Go to iowasupportmaster.com – Click Download – Download and run the software.
- B. When you receive an update available message, follow the instructions.

IOWA SUPPORT MASTER 2017 - MAIN SCREEN - ALFT & WILSON PUBLISHING

CHILD SUPPORT INFORMATION

- Parent Names
- Income
- Other Income
- Qualified Additional Dependents
- Tax Information
- Other Deductions
- Number of Children for Support
- Calculation Overrides

COMMON INFORMATION

AFFIDAVIT OF FINANCIAL STATUS

Important Iowa Support Master update available!

Please update at your earliest convenience.
Click here to update now.

[Click Here](#)

**Free
Program Resources**

[Change Background Image](#)

Child Support Amount

Cash Medical Support

Licensed to: Alft & Wilson Publishing

About

Affidavit

Analysis

CLIENT FILES

Open and Save Files

College Cost

Client Info

Find

FORMS-PRINT

Guidelines

HELP

Reverse

Split

Spousal Support

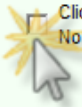
Start Over

EXIT

Iowa Support Master Update

You must have permission to modify this software on your computer. All updates during the program year are free.

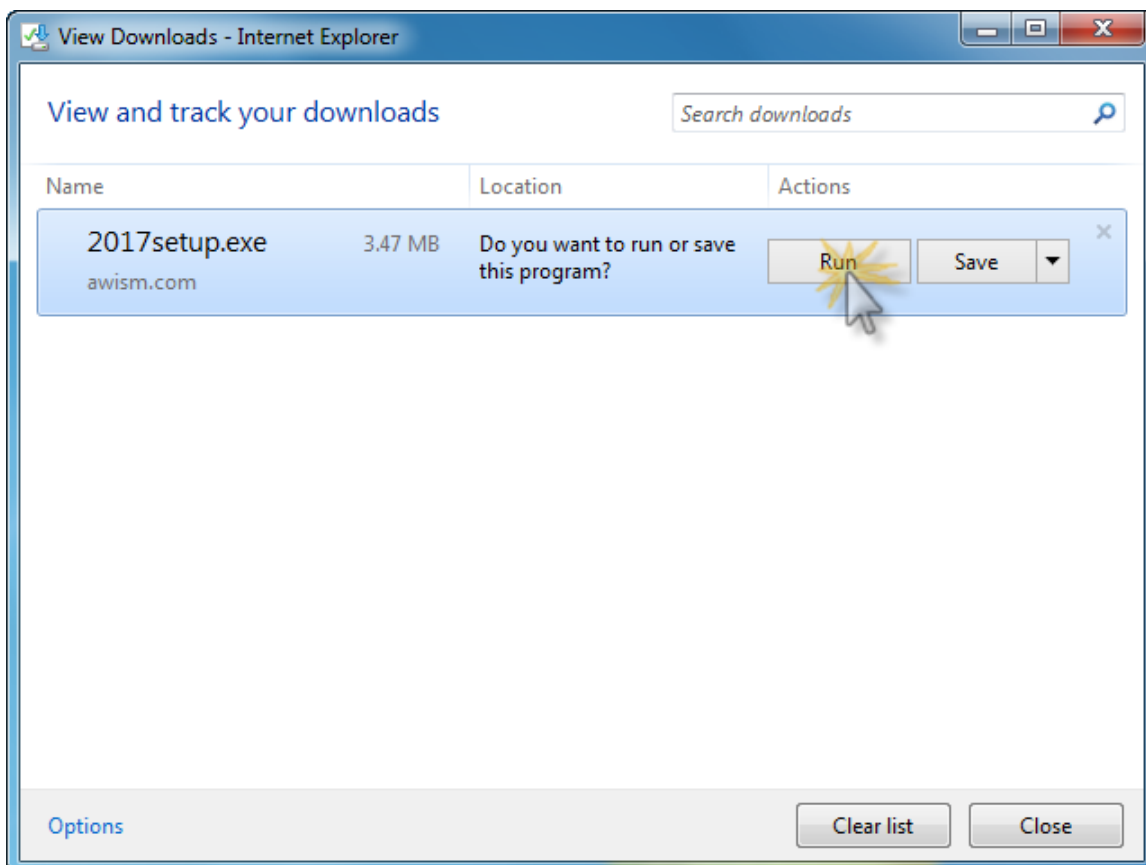
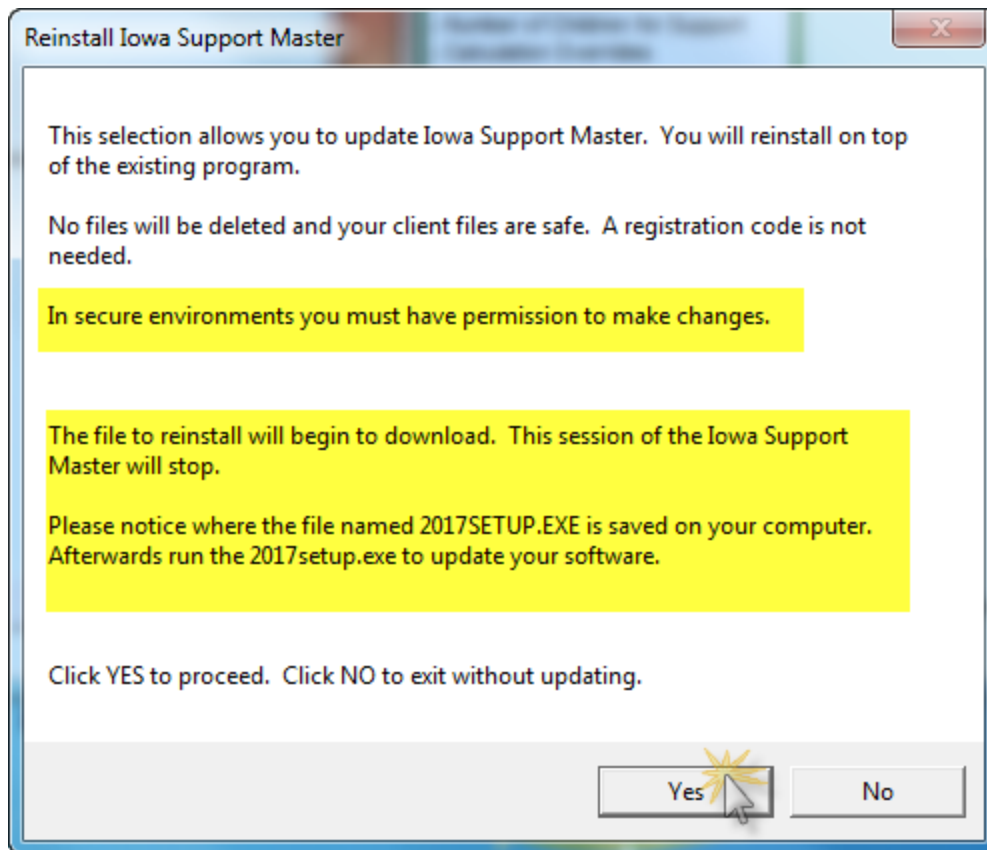
Update Iowa Support Master software

 Click here to reinstall the program which will add and replace necessary files.
No registration code is needed and all your data files are safe. You do not need to uninstall.

**** Get Me Out Of Here! ****

* I don't have permission to update this program.
 * I don't have time to update.
 * I have no idea what I'm doing

[Click Here to learn how to update the software](#)



Upcoming Webinars

<http://www.iowasupportmaster.com>

Look for the “Upcoming Webinars” link.

Basic Child Support Calculations Using Iowa Support Master

This program will be a re-peat of the December 16, 2016 webinar.

January 20, 2016 from 12:00 to 1:00 pm

[Click Here for Details](#)

2017 Iowa Support Master and Preparing Accurate Forms

This program will be detailed and provide in-depth analysis of unusual situations and cases.

January 27, 2017 from 12:00 to 1:00 pm

[Click Here for Details](#)

Office staff training sessions are available. Please contact us for details.

Email: pat@patwilson.com

Phone: 515-822-0203

If you call Mike Alft, you may end up with a box of chocolates so probably a better deal to call him!

On any Calculation – Keep these things in mind!

1. If more than one child, always print individual calculations. Do not rely on Section VI of the worksheet. If you have 3 children in issue, get your Form 1 the way you want it. Print it. Save the file example “smith.joe.3children”. Change the numbers to 2 children and get the Form 1 the way you want. Print it. Save the file “smith.joe.2children”.
2. On any calculation where there are children in daycare, always prepare a Form 1 with the daycare costs then print a Form 1 without daycare for future support calculations.
3. Be mindful of extended visitation credits.
4. Be mindful if the parties have children with others.